

Brandenburger, Sandy

From: Alan Leak <alan.leak@respec.com>
Sent: Tuesday, May 9, 2017 11:05 AM
To: Blodgett, Bob
Cc: Brandenburger, Sandy; Shannon, Patrick; Steve Witter; Arnie Reil
Subject: [External] RE: PID map of Concord MD properties - in and out
Attachments: Concord Properties Map.pdf

Bob:

It was a pleasure meeting with the Concord Metro District Board last week. Attached is the map we discussed. The green highlight outlines the properties in the Concord Metro District. Of these properties only properties 11, 12, 13, 14, 19, and 20 are in the PID. Let me know if you or the Board have any further questions. Thanks. Alan

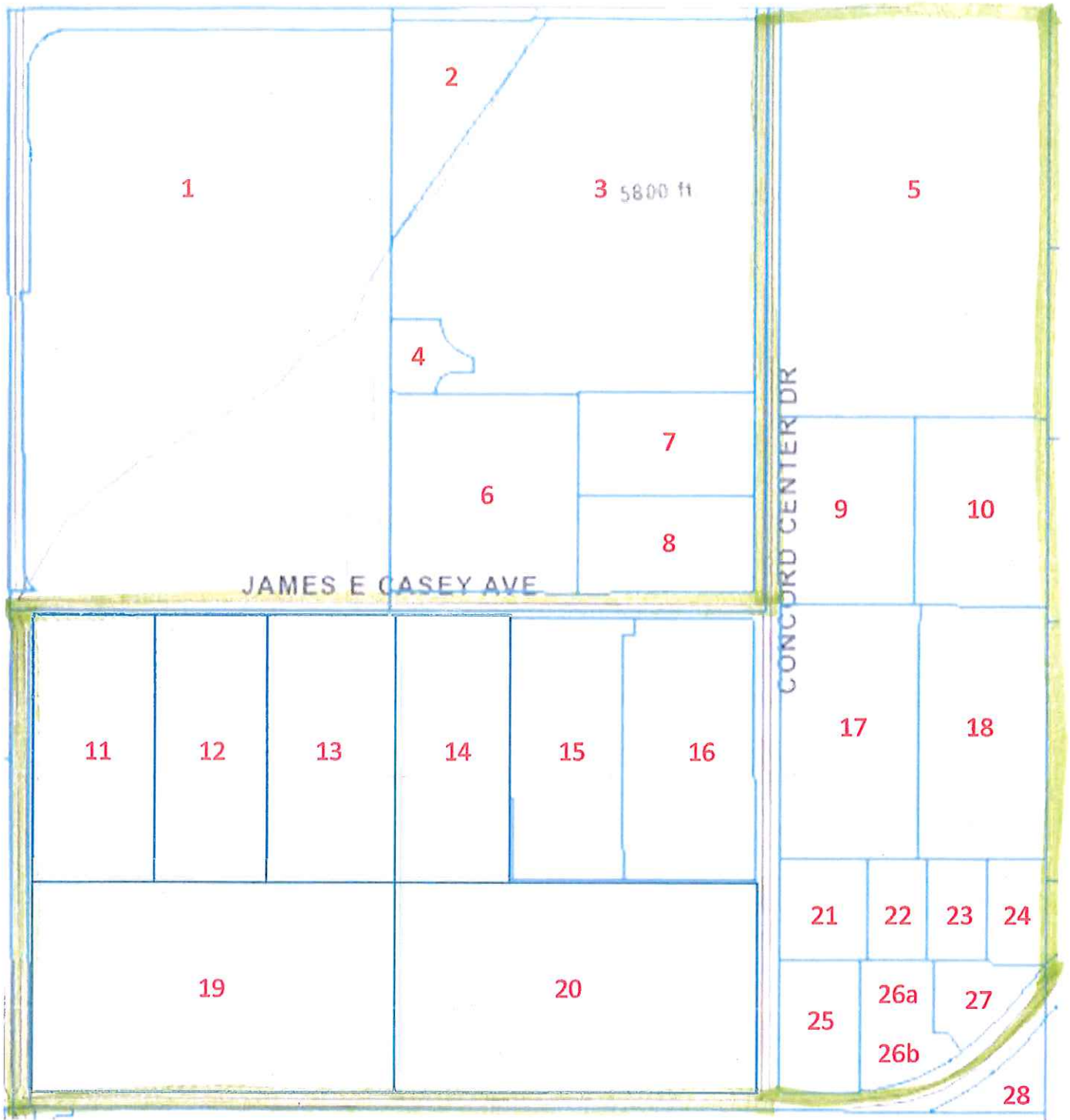
Alan J. Leak, P.E.


Program Manager – Water Rights and
Infrastructure

RESPEC

720 South Colorado Blvd., Suite 410S
Denver, Colorado, 80246
720.775.6406 office // 303.909.8670 cell
respec.com

Concord Properties Reference Map



 = Inclusion into ACWWPID